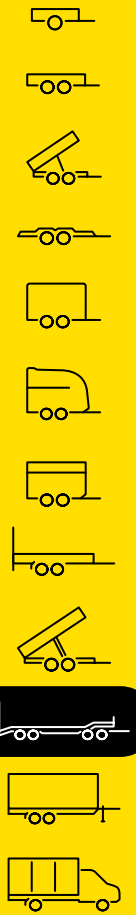


COMPLETE RANGE

Flatbed trailers and semi-trailers



Reliable and
well thought out for
the
professional
use



Experience it for yourself

Our rationale makes it easy for you to become a staunch follower of Humbaур's high-quality products.



Follow HUMBAUR!

„Because HUMBAUR can take a lot“

35 years of experience

We have been one of the leading manufacturers of car trailers for over 35 years. Over 1,000,000 trailers have left our premises since our company was founded. Nowadays, we produce around 60,000 units per year. And our wealth of experience is reflected in each of our trailers.

High quality

Robust and long-lasting — that's what a trailer needs to be. We use outstanding components and first-rate workmanship to achieve this goal. Before we deliver each trailer, we put it through its paces.

A wide range of transportation solutions

Our offering covers a very wide range of uses. Whether you are looking for a trailer for private or commercial needs, we can provide you with the appropriate model. You can choose a maximum gross weight between 750 kg and 55 t.

Wide range of accessories

Do you have very specific demands when it comes to your trailer? Thanks to a number of matching accessories, you can add to the comprehensive standard features to meet your requirements.

Committed customer service

If your trailer has a gross weight of up to 3.5 t, your dealer near you will be happy to help. Owners of trailers with a gross weight of 5 t or above can use our direct service. Whether you need a spare part or have a question about how to use your trailer — we and your local dealer, will be happy to help.

High-quality components

Quality is reflected in the detail — that's why Humbaур only uses high-quality vehicle components produced by reputable manufacturers. We continuously share our experiences with our suppliers. This enables us to continuously improve our products.

Inhaltsverzeichnis

Experience it for yourself 2
 Overview 4

Turntable flatbed trailers

HTD 3-Axle 6
 HTD 4-Axle cranked 10
 HTD 5-Axle cranked 14

Flatbed semi-trailers

HTS 30K 18

Optional accessories 22
 Strengthened by experience 26



The Series 10 000

The right low-loader for every application



Low loader turntable HTD 3-axle cranked

A classic - robust, reliable and economical. The cranked loading surface serves as a stop for wheeled or for wheeled or tracked vehicles. The load is and is easier to secure. Reduce the the already low loading height even even lower with a loading area that can be lowered by means of air suspension.



Low loader turntable HTD 3-axle straight

In addition to construction machinery, do you sometimes transport 10- or 20-foot ISO containers? With optional twistlock locks and a straight load floor, this model is ideally equipped for your transport purpose.

It is no trouble for the HTD 30, however, if you load it with construction machinery, heavy workequipment, materials, palletted goods or shuttering. The rear wall can be supported, lowered and approached on sturdy drive-up ramps.



Flatbed Turntable HTD 4-axle cranked

The new four-axle model in the HTD series has an offset cargo bed and a cargo bed that can be lowered with air suspension for particularly easy loading. Choose from three heights for the drawbar. On request you can get this model with a particularly durable hot-dip galvanised chassis. The hot-dip galvanised chassis provides optimum corrosion protection. An extensive selection of accessories makes the HTD suitable for any special requirement.



Flatbed Turntable HTD 5-axle cranked

Our top model for extremely heavy tasks with a total weight of up to 50 tons. Its solid welded construction, high-strength fine-grain steel, and cargo bed which can be loaded by air-suspension make the HTD 5-axle model a reliable partner. The cranked cargo bed area serves as a stop for wheeled or tracked vehicles. The cargo rests against a stop and is easier to secure. The model has single-part hot-dip galvanised, movable drive-up ramps.



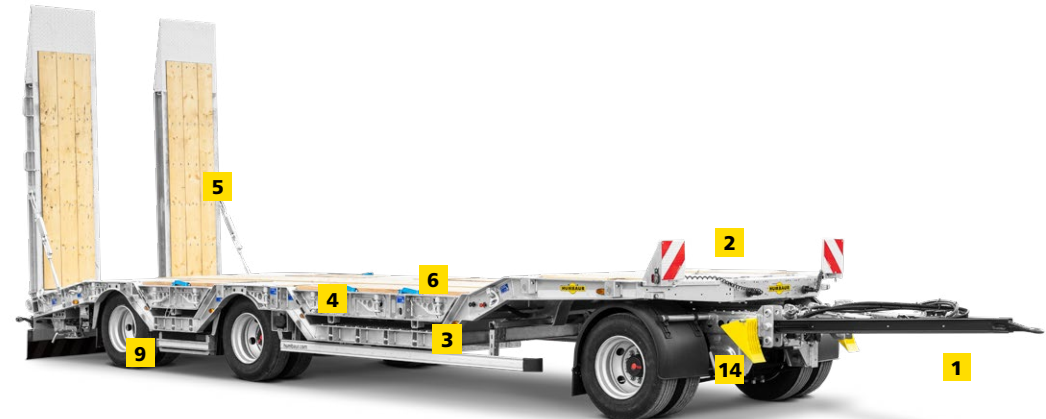
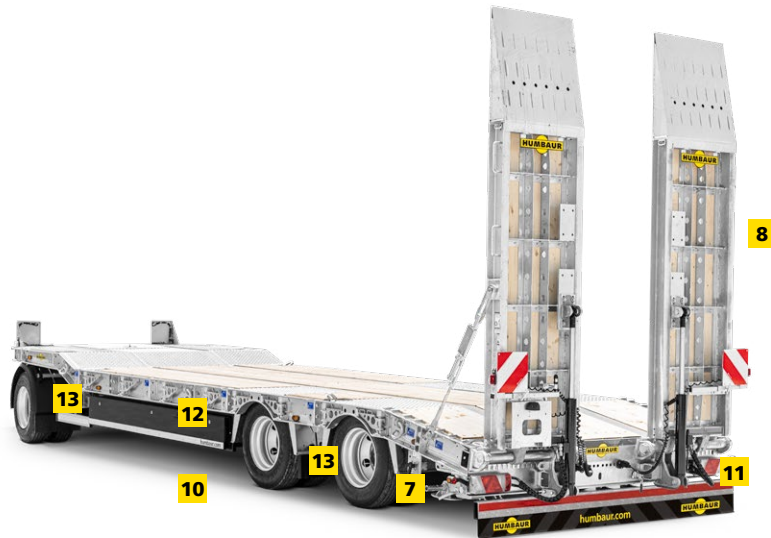
3-axle flatbed semi-trailer

The welded flatbed semi-trailer will win you over with its cranked or straight trailer floor and its low net weight. This allows construction companies to safely and conveniently transport construction vehicles such as excavators, wheel loaders, road pavers or heavy operating equipment. The adjustable kingpin means the semi-trailer can fit tractor trucks with either two or three axles. The flatbed semi-trailers are also suited for transporting containers.



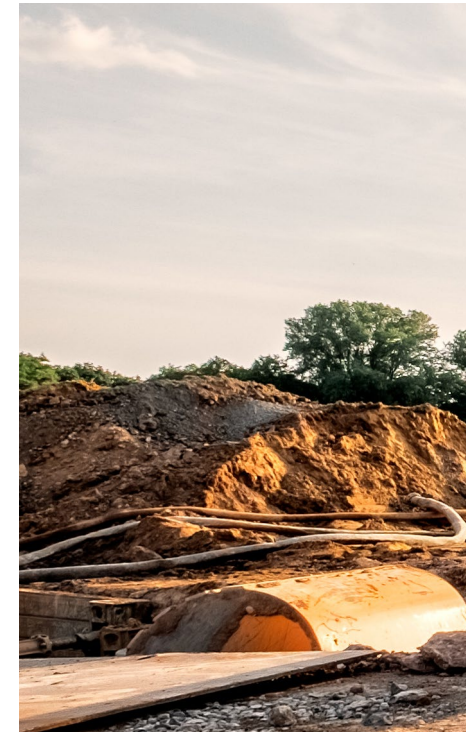
HTD 3-AXLE 30 TON TURNTABLE FLATBED TRAILER





Our classic - robust, reliable and economical

- 1 Drawbar with 8° inclined towing ring Ø 40 mm, height-adjustable silent bushes
- 2 Massive Schweißkonstruktion des Drehgestells mit großdimensioniertem Kugeldrehkranz
- 3 Solid, welded frame made of high-strength, fine-grained steel and full-length cross-beams for maximum stability, wheel recesses above the rear wheels, front corners chamfered, climbing rails on the ramp at the back for maximum safety during loading and unloading. Straight or cranked cargo bed.
- 4 Chassis and attachments are hot-dip galvanised in an immersion bath, optional excavator-style stacker
- 5 Floor made of 50 mm softwood planks
- 6 5 pairs of 10 t lashing points recessed in the platform floor
- 7 Air suspension aggregate that can also lift and lower the rear axle
- 8 Single-section, hot-dip galvanised drive-on ramps, laterally movable, directly acting, fixed spring lifters for convenient operation, optimally secured by a turnbuckle and latch
- 9 Flatbed axles with closed drum brake
- 10 EBS braking system, spring-loaded parking brake
- 11 Light clusters, impact-proof and secured against vibration, protected in the underride protection, 24 V, 15-wire connection cable
- 12 Foldable lateral impact protection, contour markers at the sides and rear
- 13 Front half-shell fender with anti-spray system in front, steel fenders with anti-spray system at the rear
- 14 2 wheel chocks with retainers



HTD 3-AXLE 30 TON TURNTABLE FLATBED TRAILER

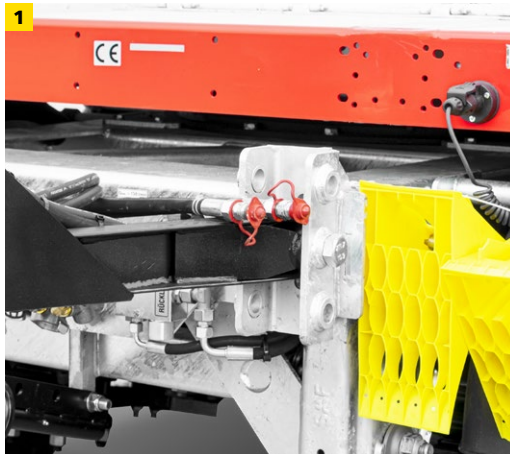
Permissible gross weight in kg	Model	Overall dimensions in mm	Internal dimensions in mm	Load capacity in kg	Load height in mm	Drive-up angle	Tyres in inches
24 000* / 30 000**	HTD 308525-3A cranked	10 780 x 2540 x 3780	6490 x 2540	17 700* / 23 700 **	890	10°	12-fold 235/75 R17,5
24 000* / 30 000**	HTD 308525-3A cranked wheel troughs	10 780 x 2540 x 3740	6490 x 2540	17 700* / 23 700 **	890	10°	12-fold 235/75 R17,5
24 000* / 30 000**	HTD 308525-3A cranked parabolic spring unit	10 720 x 2540 x 3340	6490 x 2540	17 700* / 23 700 **	890	10°	12-fold 235/75 R17,5
24 000* / 30 000**	HTD 308525-3A straight	10 770 x 2540 x 3780	8530 x 2540	17 700* / 23 700 **	930	10°	12-fold 235/75 R17,5

We reserve the right to make technical changes. All dimensions are approximate and refer to the standard vehicle without accessories. Additional equipment changes the tare weight and payload!

* Permissible total weight with divisible load without special permit

** Permissible total weight with indivisible load with special permit according to § 70 STVO





- 1 3 bearing positions for the drawbar
- 2 Roller stop with front extended plateau
- 3 Screwable and retrofittable lashing ring
- 4 Climbing rails on the outer frame in the area of the rear slope

Accessories (optional)

- Spare wheel
- Spare wheel holder as basket under the cargo bed
- Duomatic coupling
- Additional lifting / lowering at the front
- Various drawbar designs
- 7-pin socket
- Detachable rotating beacon
- Working lights
- additional reversing lights
- Wheel recesses front and rear
- Dump for excavator stick rest
- Warning package with warning signs, electrics and flashing beacon
- Securing loading rails
- Additional lashing eyes in the low bed in the high bed and in the outer frame
- Rubber coating on ramps and loading areas
- Stanchion pockets
- Insert stanchions
- Frame with container locking front and rear
- Stowage boxes
- 3 m widening
- Hydraulic ramp lifters, Support legs and side shift
- Two-part extended ramps
- Multi-voltage light and brake system (optional), both 12 - 24 V

Other accessories on request

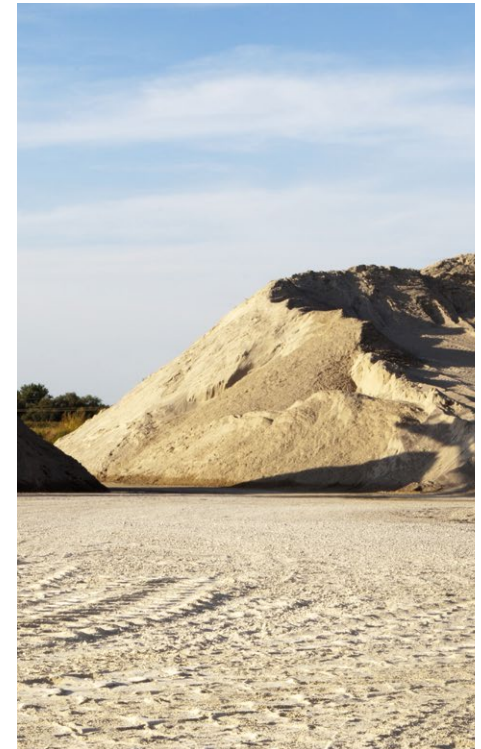
HTD 4-AXLE 40 TON TURNTABLE FLATBED TRAILER





Our turntable superclass with 4 axles - equipped for all heavy transport tasks

- 1 Offset drawbar with Ø 50 mm towing ring, height-adjustable, low-maintenance silent bushes
- 2 Solid welded construction of turntable with large slewing ring
- 3 Floor made of 50 mm softwood planks
- 4 Solid, welded frame made of high-strength, fine-grained steel and full-length cross-beams for maximum stability, wheel recesses above the rear wheels, front corners chamfered, climbing rails on the ramp at the back for maximum safety during loading and unloading. Cranked cargo bed.
- 5 4 pairs of 10 t lashing rings recessed in the flatbed 2 pairs of 10 t lashing rings recessed in the upper part of the loading area, optional 5 pairs of 3 t lashing and stanchion recesses in the outer frame
- 6 Air suspension aggregate that can also lift and lower the rear axle
- 7 Single-section, hot-dip galvanised drive-on ramps, laterally movable, directly acting, fixed spring lifters for convenient operation, optimally secured by a turnbuckle and latch
- 8 Flatbed axles with closed drum brake
- 9 EBS braking system, spring-loaded parking brake
- 10 Light clusters, impact-proof and secured against vibration, protected in the underride protection, 24 V, 15-wire connection cable
- 11 Foldable lateral impact protection, contour markers at the sides and rear
- 12 Front half-shell fender with anti-spray system in front, steel fenders with anti-spray system at the rear
- 13 2 wheel chocks with retainers
- 14 2 recessed toolboxes with folding lid in the upper part of the loading area



HTD 4-AXLE 40 TON TURNTABLE FLATBED TRAILER

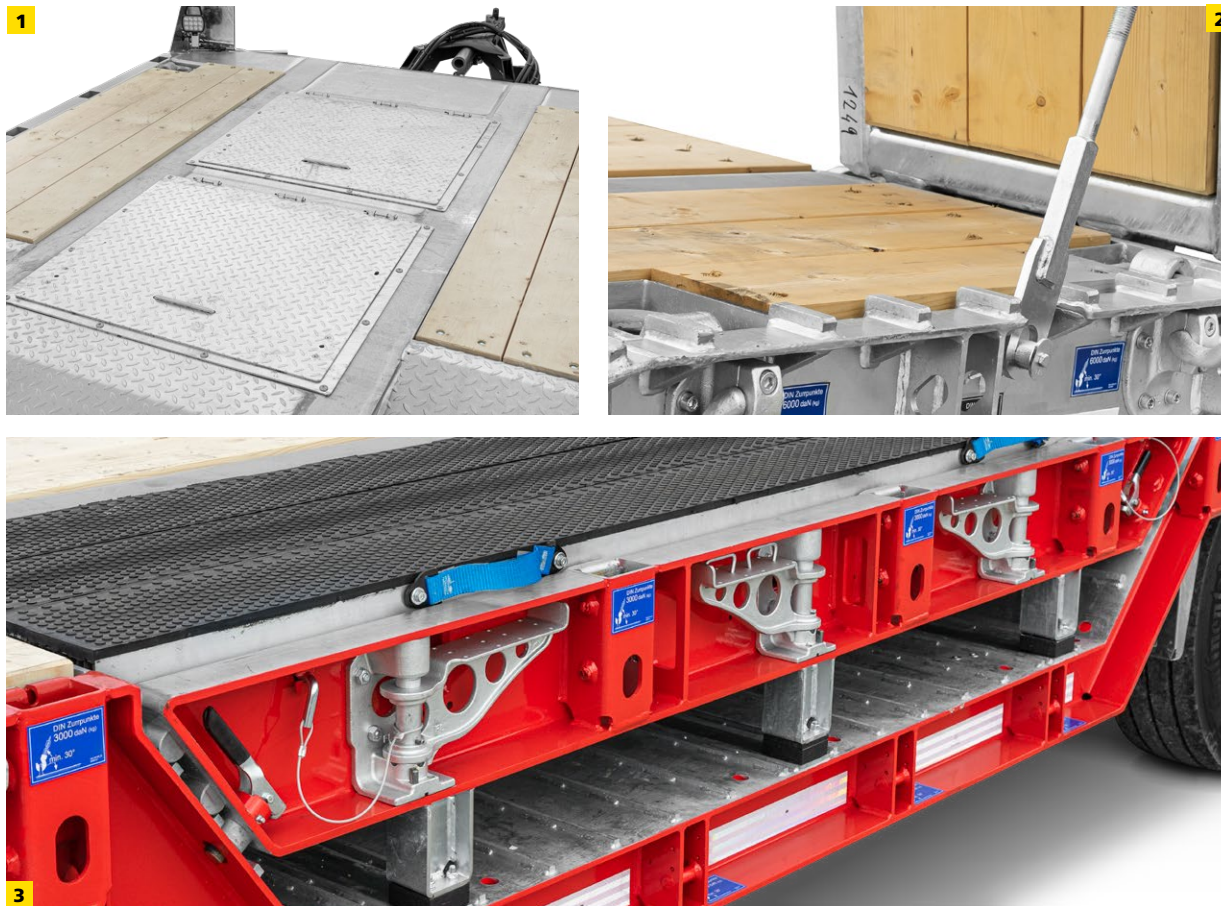
Permissible gross weight in kg	Model	Overall dimensions in mm	Internal dimensions in mm	Load capacity in kg	Load height in mm	Drive-up angle	Tyres in inches
24 000* / 40 000**	HTD 409525 cranked Radmulden	11 710 x 2540 x 3780	7160 x 2540	14 000* / 30 000 **	890	10°	16-fold 235/75 R17,5
24 000* / 40 000**	HTD 409525 cranked	11 710 x 2540 x 3760	7330 x 2540	16 500* / 32 500 **	890	10°	16-fold 235/75 R17,5
24 000* / 40 000**	HTD 409525 straight	11 720 x 2540 x 3810	9760 x 2540	16 200* / 32 200 **	900	10°	16-fold 235/75 R17,5

We reserve the right to make technical changes. All dimensions are approximate and refer to the standard vehicle without accessories. Additional equipment changes the tare weight and payload!

* Permissible total weight with divisible load without special permit

** Permissible total weight with indivisible load with special permit according to § 70 STVO





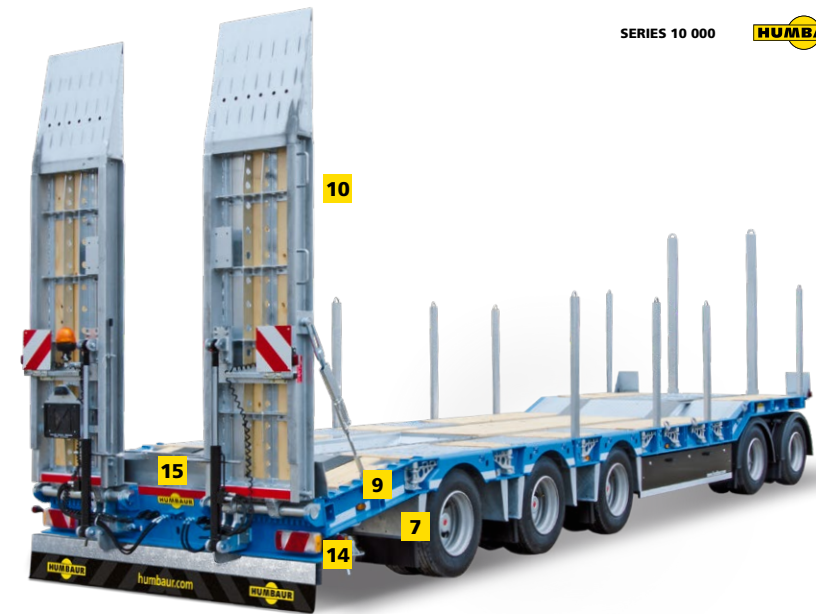
- 1 2 recessed toolboxes with hinged lid
- 2 Climbing rail
- 3 Wheel recess

Accessories (optional)

- Spare wheel
 - Spare wheel holder as basket under the cargo bed
 - Duomatic coupling
 - Additional front lifting/ lowering
 - Diverse drawbar designs
 - Socket, 7-way at rear
 - Removable beacon light
 - Work lamp
 - Additional reversing lights
 - Front and rear wheel recesses
 - Recess for digger arm
 - Warning package with sign boards, electric system and all-around lights
 - Safety loading rails
 - Additional tie-down rings in the flatbed, wheel-in and outer frame
 - Rubber coating on ramps and cargo bed
 - Stanchion brackets
 - Insertable stanchions
 - Frame with front and front/ rear container lock
 - Storage boxes
 - 3 m extension
 - Hydraulic ramp
 - Two-piece, extended ramps
- Other accessories on request

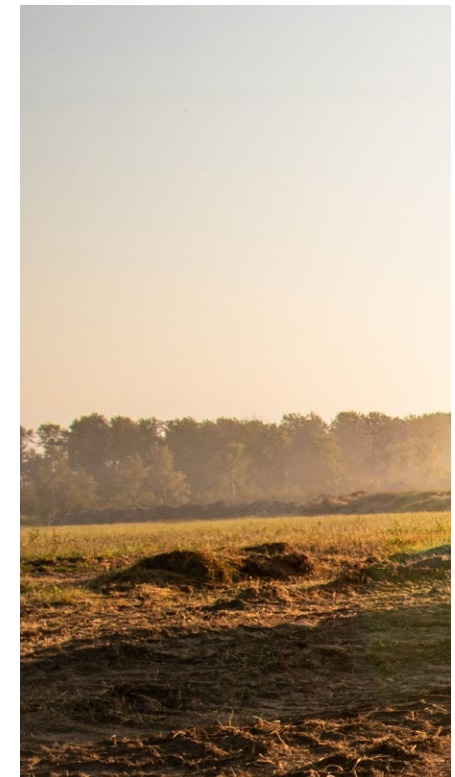
HTD 5-AXLE 50 TON TURNTABLE FLATBED TRAILER





Unsere Drehschemel Top-Modell mit 5 Achsen - für die schwersten Transüportaufgaben gewappnet

- 1 Offset drawbar with \varnothing 50 mm towing ring, low-maintenance silent bushes, complete with height adjustment
- 2 Solid welded design made from high-strength fine-grained steel, chassis frame hot-dip galvanised by immersion bath, full-length cross-beams for maximum stability
- 3 Floor made of 50 mm softwood planks
- 4 Low-maintenance slewing ring
- 5 Wheel recesses above the rear wheels, steel fenders with anti-spray system
- 6 climbing rails on the ramp at the back – maximum safety during loading and unloading
- 7 Flatbed trailer axles with closed S-cam brake, air suspension aggregate that can also lift and lower the rear axle
- 8 Spring-loaded parking brake and braking system complying with EC directive with EBS 4S/3M
- 9 5 pairs of 10 t lashing rings recessed in the flatbed
3 pairs of 10 t lashing rings recessed in the upper part of the loading area, 4 pairs of 3 t lashing points in the outer frame of the flatbed
- 10 Single-section, hot-dip galvanised drive-on ramps (3100 mm x 750 mm), laterally movable, directly acting, fixed spring lifters for convenient operation, optimally secured by a turnbuckle and latch
- 11 Optional storage box
- 12 2 wheel chocks with retainers
- 13 15-wire connection cable
- 14 Light clusters, impact-proof and insulated, protected in the underride protection
- 15 Retro-reflective contour marking in accordance with ECE Directive R 48 white on the side, red in the rear



HTD 5-AXLE 50 TON TURNTABLE FLATBED TRAILER

Permissible gross weight in kg	Model	Permissible gross weight in kg*	Overall dimension in mm	Inner dimension in mm	Tare weight in kg	Payload in kg	Loading height in mm	Drop-centre length in mm	Tyres in inches
24 000	HTD 509525-5A	50 000	11 790 x 2540 x 3760	9822 x 2540	10 900	13 100 / 39 100	890	7213	235/75 R17,5

We reserve the right to make technical changes. All dimensions are approximate and refer to the standard vehicle without accessories. Additional equipment changes the tare weight and payload!
 * with special approval





- 1 Work lamp
- 2 Storage box for widening boards
- 3 Recess for digger arm

Accessories (optional)

- Spare wheel
 - Spare wheel holder as basket under the cargo bed
 - Duomatic-Coupling
 - Additional front lifting/lowering
 - Lift and steering axles
 - Socket, 7-way at rear
 - Removable beacon light
 - Work lamp
 - Additional reversing lights
 - Front and rear wheel recesses
 - Recess for digger arm
 - Warning package with sign boards, electric system and all-around light
 - Safety loading rails
 - Additional tie-down rings in the flatbed, wheel-in and outer frame
 - Rubber coating on ramps and cargo bed
 - Stanchion brackets
 - Insertable stanchions
 - Frame with front and front/rear container lock
 - Storage boxes
 - 3 m extension
 - Hydraulic ramp lifter, supports and lateral offset
 - Two-piece, extended ramps
- Other accessories on request

FLATBED SEMI TRAILER 3-AXLE HTS





The flatbed semi trailer with 3-axes from Humba

- 1 Solid welded construction of high-strength fine-grained steel, stretched cross beams for highest stability, Chassis frame hot-dip galvanised
- 2 2" king pin adjustable by 340 mm for 2+3-axle SZM
- 3 Floor made of 50 mm softwood planks
- 4 Spare tyre holder on the front wall
- 5 Wheel cut-outs above the rear wheels, steel mudguards with anti-spray system
- 6 Rear climbing rails on ramp slope - maximum safety during loading and unloading
- 7 Low-loader axles with closed S-cam brake, Air suspension unit including lifting and lowering acting on rear axle unit
- 8 Spring-loaded parking brake, brake system in accordance with EC directives with EBS 4S/3M
- 9 3 pairs of lashing rings 6 t recessed in the high bed, 3 pairs of lashing rings 3 t recessed in the high bed outer frame, 5 pairs of lashing rings 10 t recessed in the low bed, 6 pairs of lashing points 3 t recessed in the low bed outer frame
- 10 One-piece hot-dip galvanised drive-on ramps with 50 mm softwood decking, can be moved sideways, direct-acting standing spring jacks for easy operation, optimum securing with turnbuckle and counter stop
- 11 Optional storage box
- 12 Foldable side guard
- 13 2 wheel chocks with holder
- 14 15-pin socket
- 15 Multi-chamber lights in 24 V, shockproof and damped protected in the underride guard
- 16 Retroreflective contour marking in accordance with ECE Directive R 48 white on the side, red at the rear



FLATBED SEMI TRAILER 3-AXLE HTS

Permissible gross weight in kg	Model	Permissible gross weight in kg***	Overall dimension in mm	B-dimension in mm	Flatbed in mm	Payload in kg	Load height in mm	Tare weight in kg	Tyres in inches
35 000* / 48 000**	HTS	48 000	12 630 x 2540 x 3780	11 640	8680 x 2540	27 000* / 40 000**	890	8000	235/75 R17,5
36 000* / 48 000**	HTS wheel recesses cranked	48 000	12 630 x 2540 x 3780	11 560	8680 x 2540	25 500* / 37 500**	890	10500	235/75 R17,5

We reserve the right to make technical changes. All dimensions are approximate and refer to the standard vehicle without accessories. Additional equipment changes the tare weight and payload!
 * Permissible total weight with divisible load without special permit ** Permissible total weight with indivisible load with special permit according to § 70 STVO *** with special permit



Accessories (optional)

Spare wheel

Spare wheel holder as basket under the cargo bed

Duomatic coupling

Additional lifting / lowering at the front

Lift and steering axles

7-pin socket at the rear

Detachable rotating beacon

working lights

additional reversing lights

wheel recesses front and rear

Aluminium ramp to the raised bed

Dump for excavator stick rest

Warning package with warning signs,
electrics and flashing beacon

Securing loading rails

Additional lashing eyes in the low bed
in the high bed and in the outer frame

Rubber flooring on ramps and loading areas

Hardwood flooring for ramps and loading area

Stanchion pockets

Insert stanchions

Frame with container lock
front and rear

Stowage boxes

3 m widening

Hydraulic ramp lifters,

Support legs and side shift

Two-part extended ramps

Aluminium drop sides for loft bed

Aluminium storage compartment on high bed

Hydraulic forced steering

Other accessories on request



- 1 Recessed lashing point
- 2 Aluminium drop sides for loft bed
- 3 King pin
- 4 Wheel recess

- 5 Stowage box
- 6 Aluminium ramp to the raised bed
- 7 Reversing light

Our range of accessories

Chassis



Swivel towing eye, Ø 40/50 mm



Length adjustable drawbar



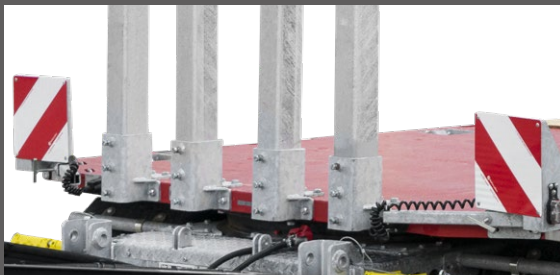
Outer frame hot-dip galvanised and painted according to RAL



Lashing point integrated in the outer frame up to 3 000 kg tensile force



Recessed lashing point up to 10 000 kg tensile force



Stanchion pocket and insertion stanchions attached at the front end, warning plates



Stanchion pockets in the outer frame

Chassis



Integrated in the outer frame lashing point up to 6 000 kg tensile force



Plug-in aluminium drop sides in the high plateau



Tailored to your requirements



CHASSIS



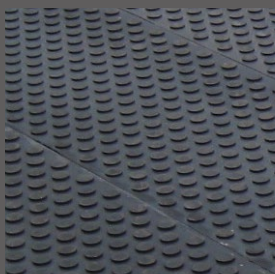
3 m equipment package -
Folding boom and wooden planks



Retractable warning signs



Wheels recess



Rubber flooring



Folding boom for 3 m
Equipment package



Load securing rails

Our range of accessories

Electrics / Lighting

Electrics / Lighting



Duomatic coupling



2 x 7-pin plug incl.
Connecting cables



Additional
Reversing spotlight



1 x 7-pole and 1 x
4-pole plug
incl. connecting cables



Additional LED
worklight



Tailored to your requirements

Hydraulics / Ramps



Split ramps with Coupling rod



2-part ramp wall over the entire width with wooden planking



Steel ramp wall over the entire width with grating



Rubber flooring on aluminium panels for ramps



Hydraulic support feet



Hydraulic support feet



1-part hydraulic ramps with hydraulic side shifting



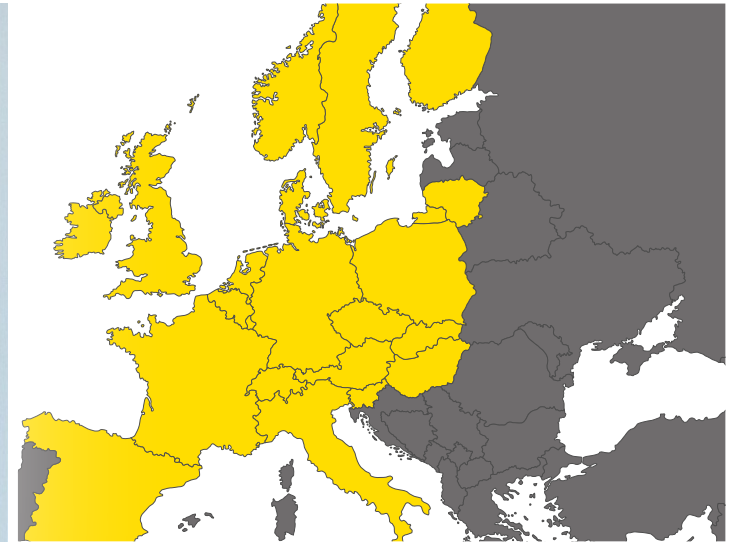
Strengthened by experience

Humbaur stands for innovation and customer-oriented solutions. This approach has enabled this owner-managed, medium-sized family business to become the **European market leader**. With around **420 different standard trailer models** from 750 kg to 55 tonnes for commercial and private clients and 230 models of the FlexBox vehicle bodies, it has the perfect solution to every transport problem. For over 35 years we have built a wealth of experience, together with our trading partners and customers that is reflected in each of our products – **in sophisticated functions and details, greater user-friendliness and a high level of driving comfort.**

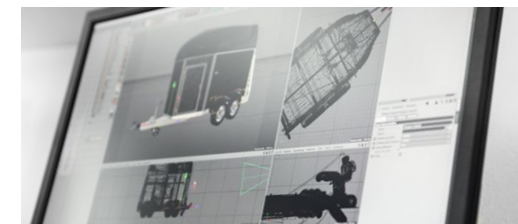
Our trademarks include robust and low-maintenance vehicles with an extensive range of standard equipment, as well a wide range of accessories plus the ability to offer customised solutions. Our own manufacturing expertise – ranging from small metal parts to polyester roofs or sandwich panels – combined with quality components from renowned manufacturers, ensures **durable products which retain their value well.**



Ulrich Humbaur
Proprietor, Director



Together with our **partner network**, we provide comprehensive local support for all your transport problems. Together, we will find the right solution for your transport requirements and will take care of **servicing and repairs**. Our service includes reasonably priced repair options, as well as the **long-term availability of spare parts** so that you can enjoy and use your trailer or vehicle body for years to come.



Outstanding quality

We place great importance on the fact that our products operate even under **tough conditions** with no nasty surprises. We construct our trailers in robust designs using suitable materials of the required strength. We simulate the hardest conceivable use for our trailers on various test tracks. We check the stability and durability of the chassis, frame and components at full load. This is how we ensure the **outstanding quality** of our trailers.



Our **quality management system** is certified to **DIN EN ISO 9001:2015** and **KBA-ZM-A** and is regularly reviewed. We are also certified by numerous commercial vehicle manufacturers as a construction and reconstruction partner for the vehicle body segment. We regularly demonstrate **our quality** through recurring checks and through our products themselves.



As a customer, you benefit from this twice:
during use and when it comes to reselling.





More information is available online at
[humbaur.com/en/dealersservice/downloads/](https://www.humbaur.com/en/dealersservice/downloads/)

Do you have any questions about this or another trailer from our range or would you like some personal advice? We look forward to hearing from you.

Contact us by phone on **+49 (0) 821 / 24 929 - 0**
or by email at info@humbaur.com

YOUR HUMBAUR CONTACT IN YOUR AREA

